



(→)flow.
workflow that is.

Peek inside for all the products that make color flow.

What's new?

ADDING INNOVATION TO WORKFLOW.

As the graphic design and photography worlds evolve, Pantone is committed to providing tools that match. From onscreen color correction to electronic color communication to more technically accurate formulas, Pantone continues to broaden the ways we color your world.



huey™

For award-winning color that never lies. Winner of the Digital Focus Innovation Award, DIMA Innovative Digital Product Award, and the American Photo Editors Choice Award, huey is a great way to get true color from screen to print. An easy-to-use color correction tool, huey automatically calibrates onscreen color for accurate prints, intense game graphics, and true-to-life movie experiences. huey adapts your monitor for changing lighting and applies personal preferences for accurate color.

MEU101



More of what's new.

Color Cue®2

Now you can capture your color inspirations with the Color Cue®2.

Please see page 4 for product information.



COLOR BRIDGE™ uncoated

The ultimate guide that incorporates technological advances in color management to make color matching virtually flawless.

Please see page 7 for product information.



Every tool from inspiration to application.

If you dream in color, there's only one place to turn for a precise and perfect product faster than you ever imagined. Pantone - the world's color authority and clear choice for designers of all levels.

Using PANTONE Products during your entire workflow will make your project move smoothly and quickly. This year, new innovations in color make PANTONE an even greater tool for designers worldwide. So no matter what part of the process or program you're using - QuarkXPress®, PowerPoint®, Adobe® Creative Suite, etc. - PANTONE Products will keep color flowing and clients happy.

→ identify.



With the Color Cue®2, your browns will translate to your page in a snap.

Color Cue®2 The immediate answer to "I wonder what color this is?" Now you can capture color with confidence in seconds with this electronic, portable PANTONE Library. Simply place the Color Cue®2 on the color you want to match, and a quick reading gives you the closest corresponding PANTONE Color, selected from the full PANTONE MATCHING SYSTEM®, PANTONE for fashion and home color system and PANTONE PAINTS + INTERIORS color system. Another touch of the button translates the PANTONE Color into sRGB, HTML and L*A*B* values.

Features + selectable screen displays + store and recall up to 30 colors + close and neighboring color reporting + large color LCD display + stylish protective case

GEB103



→ calibrate.



Eye-One® Display 2 helps solve pesky calibration issues so monitors and printers can be friends.

Eye-One Display 2 Finally get perfect color without the tedious tweaking and proofing. The choice of professional photographers, ad agencies, publishers and designers, Eye-One Display 2 accurately calibrates and profiles all types of monitors, including LCD, CRT and laptops. With its advanced controls, you can identify the best possible match across multiple monitors, optimize gray balance and determine optimal room lighting for color-critical work.

For more information about huey, see page 2.

huey MEU101
Eye-One Display 2 MEU103



→ select spot.



Uncoated PANTONE SOLID CHIPS makes discovering color pleasure rather than pain.

SOLID CHIPS The world-famous chip gets a face-lift. Larger format tear-out chips are great for rearranging custom palettes, presenting accurate color samples to clients and communicating exact specifications to printers.

two-book set coated, uncoated GP1203
three-book set coated, uncoated, matte GP1204

FORMULA GUIDES When a spot color is required, these guides provide the latest collection of solid PANTONE Colors in a portable fan-deck format for easy reference. The current palette includes over 1,100 color choices complete with ink mixing formulations.

two-guide set coated, uncoated GP1201
three-guide set coated, uncoated, matte GP1202



→ decide.



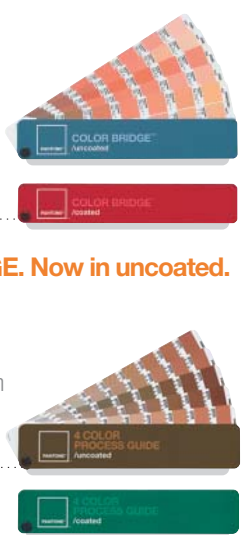
Make colors perfect on every platform with the PANTONE COLOR BRIDGE.

COLOR BRIDGE Only about half of PANTONE Colors look the same when printed in CMYK. PANTONE COLOR BRIDGE shows you those that do and – more importantly – those that don't. Use the guides to select PANTONE Colors, compare to their CMYK equivalents and match in RGB or HTML.

COLOR BRIDGE coated GGS201
COLOR BRIDGE uncoated GGS204
COLOR BRIDGE Set GPS207

4-COLOR PROCESS GUIDE set With over 3,000 colors displayed in these guides, you'll never be at a loss when creating color palettes – whether you're going from green to blue or red. Printed on coated and uncoated paper, the CMYK colors are perfect when on a tight budget or when seeking complements to spot color choices.

GPS204



→ proof.



Keep color popping with ColorVANTAGE® inks; then reveal any imperfections with the PANTONE Color Viewing Light.

ColorVANTAGE inks Achieve superior color gamut with ColorVANTAGE inks, reproducing color precisely. PANTONE ColorVANTAGE inks are specially formulated pigment inks designed to produce rich, vibrant archival-quality prints, capturing every detail in your photographs and designs. Developed for EPSON Stylus® wide-format and EPSON-compatible printers, they are the inks to use when output quality is critical.

Features + precision color reproduction + wide color gamut + archival quality prints + neutral black and white prints + hundreds of free profiles for popular papers + excellent value – savings of up to 20% over EPSON inks

Visit colorvantageinks.com to learn more and find out where to purchase.

viewing lights For accurate color matches, think inside the light box. With controlled lighting conditions, you can take the guesswork out of color matching by eliminating false reads and misrepresented color matches. Our lighting environments allow you to view two different daylight settings, fluorescent, incandescent and UV, ensuring accurate color matches for your most critical projects.

three-light model (110V/60HZ) PVL-310
five-light model (110V/60HZ) PVL-511

220V/50HZ version also available. PVL-522

special effects.



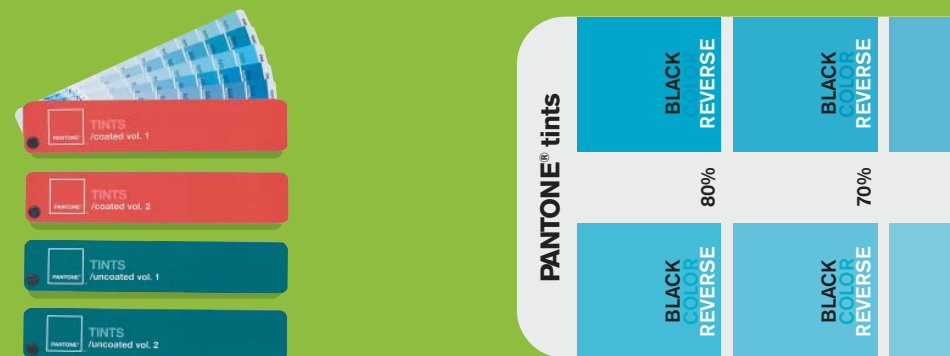
METALLICS – 97 new colors All that pizzazz. And then some. This much broader, even more spectacular palette of colors adds impact to printed materials like never before. Now features 301 PANTONE Metallic Colors printed on coated stock. Larger chips with 38% more color area.

METALLIC FORMULA GUIDE coated GG1207
METALLIC CHIPS coated GB1204



PASTELS – 28 new colors For quieter but versatile designs. When the situation calls for a softer palette, this expanded guide helps specify even more subtle colors. Now features 154 PANTONE Pastel Colors arranged chromatically on both coated and uncoated stocks, complete with ink formulas.

PASTEL FORMULA GUIDE coated + uncoated GG1208
PASTEL CHIPS coated + uncoated GB1205



TINTS Just the right touch. Tinting spot color is a game of percentages. For optimal results, this TINTS four-guide set offers eight tints from 10-80%, plus numerous tint effects.

GP1205

hexachrome®.

Open your gamut, free your design.



ColorSuite® for HEXACHROME Our Hexachrome guide and separation software allow you to simulate more PANTONE Colors in 6-color process than using CMYK alone. And with almost 90% match-rate of spot color to Hexachrome, you'll not only save time and money, but extend your gamut and design possibilities dramatically.

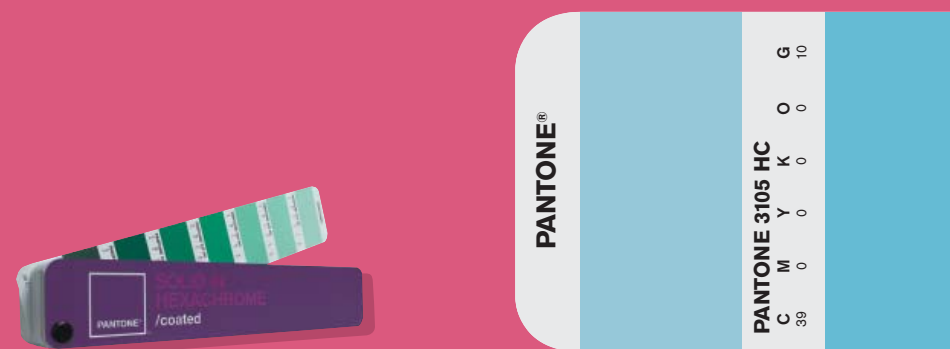
This package boasts all of the essentials for working in this large gamut, 6-color process. Includes HEXWARE® software, COLOR BRIDGE coated and SOLID IN HEXACHROME coated guides, test form and test form CD.

GPX201 Euro version also available. GPX202

HEXWARE This software allows you to create and edit color palettes, color-correct, separate and soft-proof images. Plug-in set for Adobe Photoshop® and Adobe Illustrator® features HexImage® and HexVector® software.

Minimum System Requirements Adobe Photoshop 6 or later, Adobe Illustrator 9 or later, 96 MB of RAM, 50 MB of hard disk space, Windows® 98, Windows ME, Windows 2000, Windows XP or Mac OS 9/S X.

GSX110



SOLID IN HEXACHROME coated With our SOLID IN HEXACHROME coated guide, you have the ability to compare PANTONE MATCHING SYSTEM Colors to their Hexachrome equivalents.

GGH200

bundles.



REFERENCE LIBRARY A display of options. Instead of scrambling when the printer or client calls, house a full collection of PANTONE Tools in one beautifully designed unit. It's the perfect resource for anyone who needs an entire range of color at a moment's notice.

Includes + FORMULA GUIDES coated, uncoated, matte + COLOR BRIDGE coated + SOLID IN HEXACHROME coated + METALLIC FORMULA GUIDE coated + PASTEL FORMULA GUIDE coated + uncoated + TINTS four-guide set + 4-COLOR PROCESS GUIDES coated, uncoated + SOLID CHIPS three-book set coated, uncoated, matte

GPS206 Euro version also available. GPE202



ESSENTIALS. Best Value Bundle.

ESSENTIALS On-the-go color you can't go without. This value package is a cost-effective way to upgrade your PANTONE Collection with a full set of new guides to ensure quality results with every project. Get six indispensable PANTONE Guides in a convenient travel case.

Includes + FORMULA GUIDES coated, uncoated, matte + COLOR BRIDGE coated + 4-COLOR PROCESS two-guide set + carrying case

GPS205 Euro version also available. GPE204

plastics.

Add personality to plastics with the PANTONE PLASTICS selector.



transparent selector The PANTONE plastics transparent selector consists of our extensive palette of 735 transparent colors packaged in a convenient two-binder set.

PBT100

Available as an opaque and transparent set.

PPTQ100

individual selector chips We offer all colors as individual reference chips to help create your own custom palettes or replace frequently used colors.

LCT/LCQ

opaque selector The PANTONE plastics opaque selector includes a complete palette of 1,005 of the most widely used, up-to-date opaque colors, as well as over 900 cross-references to the PANTONE MATCHING SYSTEM and PANTONE Textile Color System®. All chips in this three-binder collection have both gloss and matte finish.

PBQ100

books.



The world's leading color expert, **Leatrice Eiseman**, offers her knowledge and insight with a mind-opening series of books.

PANTONE More Alive With Color Based on the colors of your eyes, hair, skin and psyche, discover your range of beautiful colors using Leatrice's "Colortimes." Tear out your personal Colortime palette and take it with you to make shopping fun, easy and flattering.

DBR103

PANTONE Guide to Communicating with Color

Make your color choices predictable, credible and effective. This book is filled with hundreds of color combinations and illustrations.

DBR100

PANTONE Colors for Your Every Mood

Discover your own color preferences and how to make them work for you. This how-to book offers practical information and fascinating psychological insights for everyone who makes color decisions.

DBR101

The Color Answer Book Answers to the 100 most frequently asked color questions for home, health and happiness. The Color Answer Book delves into all areas of life, from fashion to decoration and health.

DBR102





**FOR MORE INFORMATION ON
PANTONE'S FULL LINE OF PRODUCTS,
PLEASE CONTACT YOUR PREFERRED
DISTRIBUTION PARTNER.**

PANTONE® and other Pantone, Inc. trademarks are the property of Pantone, Inc. Adobe, Illustrator and Photoshop are either registered trademarks or trademarks of Adobe Systems Incorporated in the United States and/or other countries. Microsoft and Windows are either registered trademarks or trademarks of Microsoft Corporation in the United States and/or other countries. Apple, Macintosh, Mac and Mac OS are trademarks of Apple Computer, Inc. Quark and QuarkXPress are trademarks of Quark, Inc. and all applicable affiliated companies, Reg. U.S. Pat. & Tm. Off. and in many other countries. GretagMacbeth and Eye-One are registered trademarks of GretagMacbeth. EPSON and EPSON Stylus are registered trademarks of Seiko Epson Corporation. All other product names and trademarks are the property of their respective owners. Any omission of such marks from any product is regretted and is not intended as an infringement on such trademarks. PANTONE Colors may not match PANTONE-identified standards. Consult current PANTONE Color Publications for accurate color. © Pantone, Inc., 2006. All rights reserved.